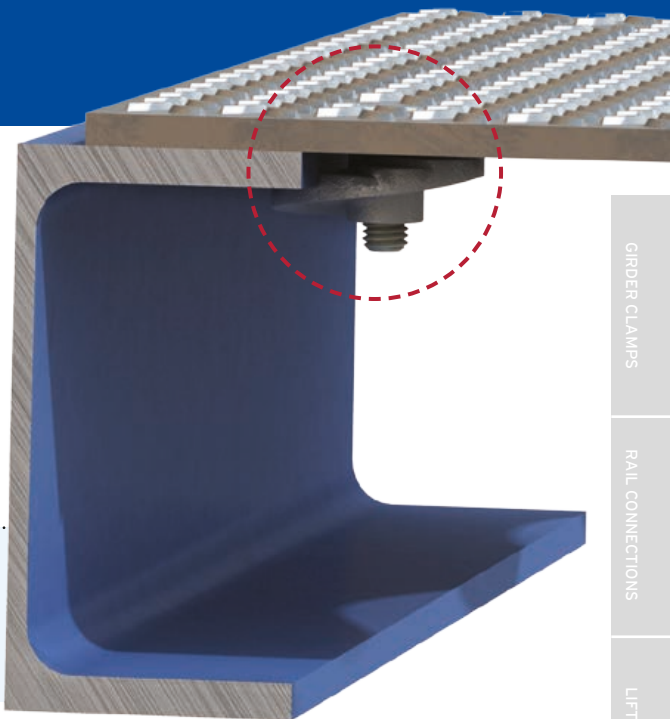
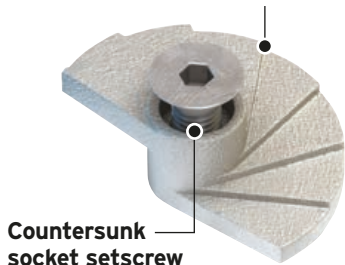


Type FF - FloorFast®

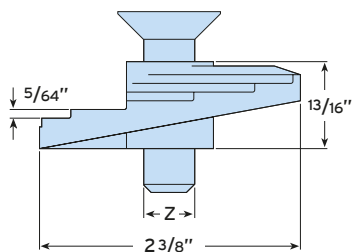
An innovative product for connecting checker plate flooring to the supporting steel. The stepped clamping face locks under the steel to provide a secure connection.



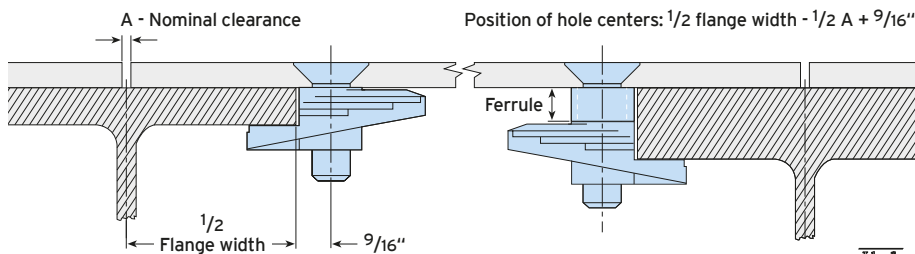
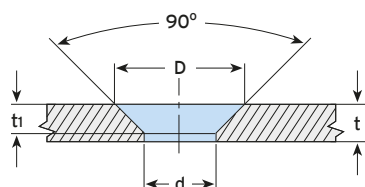
Unique stepped clamping face



Countersunk socket setscrew



- Superior clamping force from the cast body.
- Lloyd's Register Type Approval for resistance to shock and vibration.
- Zero protrusion above the surface of the floor plate.
- Available in malleable iron or stainless steel grade 316.



Material: Malleable iron, zinc plated / hot dip galvanized. Also available in stainless steel grade 316.

Product Code	Bolt ¹⁾ Z	Floorplate Thickness t	Floorfast	Flange Thickness			Dimensions						
				Floorfast with Ferrule ²⁾			Hole Ø d	Countersunk Ø for Bolt		Countersunk Depth for Bolt		Tight. Torque ft lb	Hexagon Key mm
				10mm (3/8")	20mm (13/16")	30mm (13/16")		BZP D	HDG D	BZP t _i	HDG t _i		
LFF031	M8 (5/16")	3/16" - 1/2"	1/8" - 5/8"	1/2" - 1"	7/8" - 13/8"	15/16" - 113/16"	3/8"	11/16"	-	3/16"	-	8	5 (3/16")
LFF037	M10 (3/8")	3/16" - 1/2"	1/8" - 5/8"	1/2" - 1"	7/8" - 13/8"	15/16" - 113/16"	7/16"	13/16"	3/4"	3/16"	3/16"	16	6 (7/32")
LFF050	M12 (1/2")	1/4" - 1/2"	1/8" - 5/8"	1/2" - 1"	7/8" - 13/8"	15/16" - 113/16"	9/16"	1"	15/16"	1/4"	3/16"	16	8 (5/16")

1) Hot dip galvanized M10 and M12 versions are supplied with a slotted countersunk screw.
 2) To order FloorFast with a ferrule, simply add ferrule size to product code (eg. LFF050 with 10mm (3/8") ferrule).

How to install...

- 1) Assemble bolt and FloorFast through the checker plate.
- 2) Align castings with the straight edge parallel to the edge of the plate and hand tighten.
- 3) Lay the floorplate into position.
- 4) Using a hexagon key release countersunk screw one full turn.
- 5) Tighten down the countersunk socket screw.



▶ Watch the installation at www.LindapterUSA.com

Removal: Using a hexagon key, give the FloorFast one full anti-clockwise turn to release the connection from the flange.