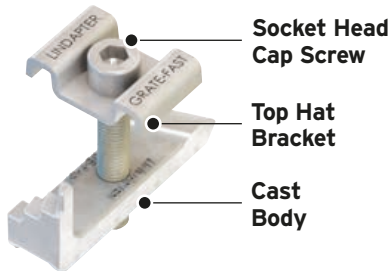


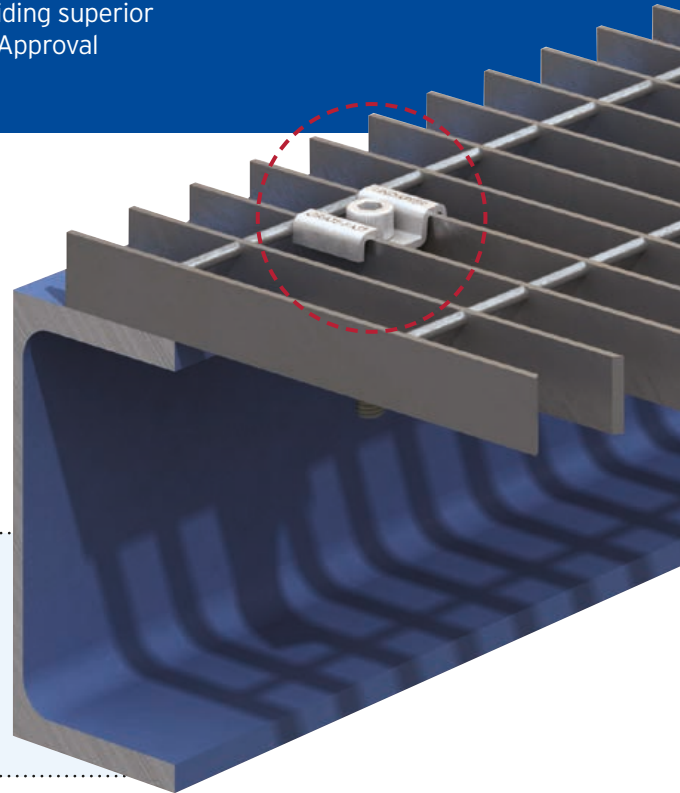
Type GF - Grate-Fast®

A high strength floor connection for rectangular open bar grating, providing superior clamping force due to a malleable iron cast body. Lloyd's Register Type Approval for resistance to shock and vibration.

LGFO37

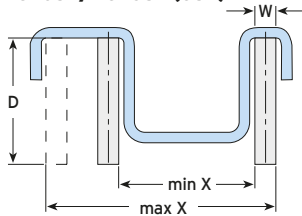


LGFO25-11W



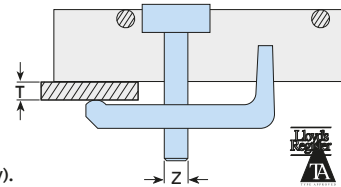
- **LGFO25-11W** for 11-W or 11-P series of close mesh bar grating.
- **LGFO31** for GRP grating with stainless steel top hat bracket, Sheraplex coated body and socket head screw.
- **LGFO37 (OSB)** is hot dip galvanized for increased corrosion resistance.
- **LGFO37** is hot dip galvanized for use with 13/16" width floor grating bars only.

LGFO31 / LGFO37 (OSB)

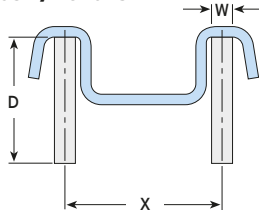


Top Hat Material:
Stainless steel (LGFO31 only).
Mild Steel, hot dip galvanized (LGFO25-11W, LGFO37 (OSB) and LGFO37 only).

Body Material:
Malleable iron, Sheraplex (LGFO31 only).
Malleable iron, hot dip galvanized (LGFO25-11W, LGFO37 (OSB) and LGFO37 only).



LGFO37 / LGFO25-11W



Product Code	Bolt Z	Flange T	Grating Bar Depth D	Grating Bar Width W	Bar Distance X	Tightening Torque ft lb	Hexagon Key mm
LGFO25-11W	M6 (1/4")	1/4" - 3/4"	1" - 2"	1/8" - 3/16"	1 1/16"	3	5 (3/16")
LGFO31 ¹⁾	M8 (5/16")	1/8" - 3/4"	7/8" - 1 1/2"	3/16" - 3/8"	3/4" - 17/8"	4	6 (7/32")
LGFO37 (OSB) ²⁾	M10 (3/8")	1/8" - 3/4"	13/16" - 2"	1/8" - 1/4"	1" - 13/4"	8	8 (5/16")
LGFO37 ¹⁾	M10 (3/8")	1/8" - 3/4"	3/4" - 1 9/16"	1/8" - 1/4"	1 3/16"	8	8 (5/16")

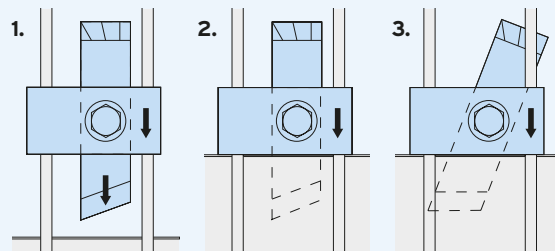
1) Supplied with socket head cap screw.
2) Supplied with hex head screw.



How to install...

Watch at www.LindapterUSA.com

- 1) Position pre-assembled Grate-Fast with the body between the grating bars and the nose pointing towards the steel. The arrows on the top hat bracket should also be point towards the supporting steel and the bracket itself resting on the bearing bars.
- 2) Slide the Grate-Fast towards the steel until the nose fits under the beam flange. Where necessary adjust the body / screw to the approximate flange thickness / grating depth.
- 3) Tighten the screw. The Grate-Fast body will automatically rotate until it locks under the bearing bar, with the nose under the flange. Tighten to the recommended torque.



Note: Tighten the LGFO31 socket head cap screw with a 1/4" hexagon key. Tighten LGFO37 (OSB) and LGFO37 hex head screw using a torque wrench with a 5/16" A/F socket.