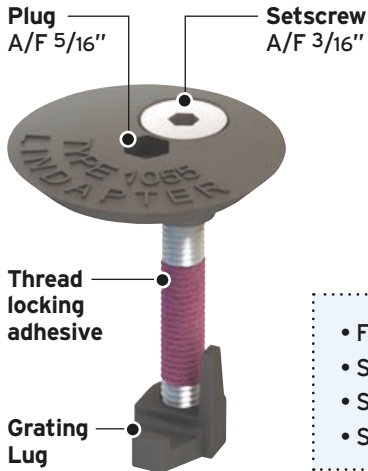
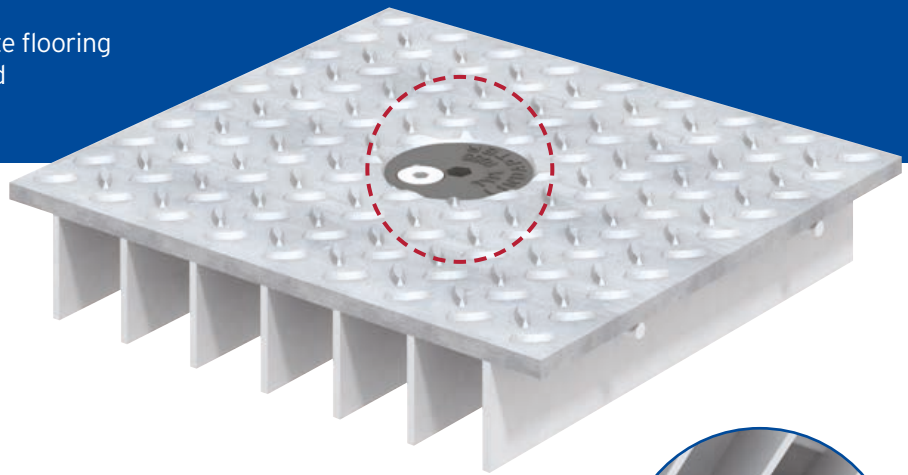
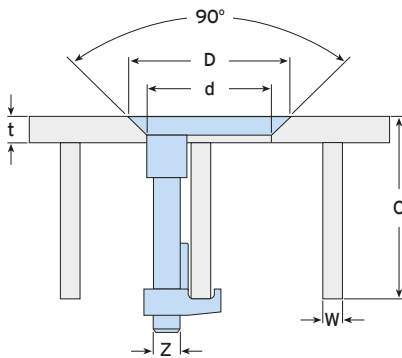
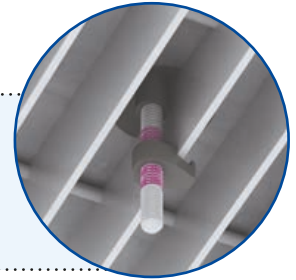


## Type 1055

This unique solution enables solid plate flooring to be fitted to open-mesh or open-grid flooring using simple hand tools.



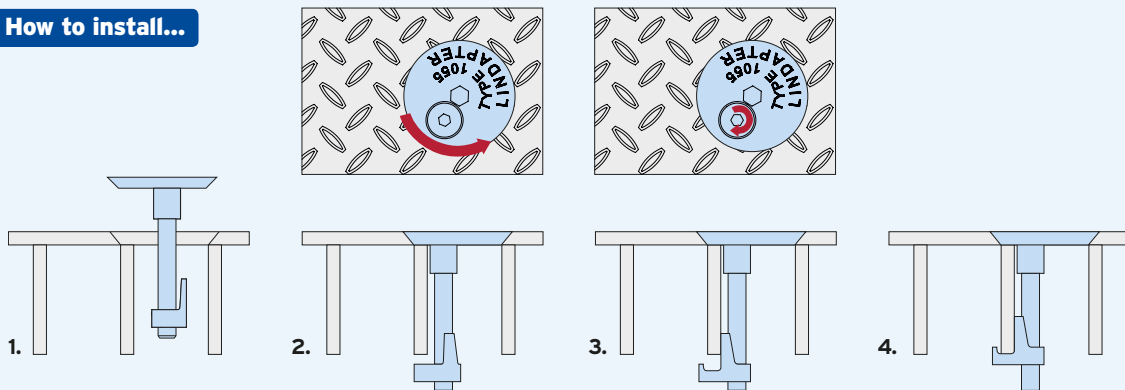
- Fast installation from above, no expensive scaffolding needed.
- Stainless steel for high corrosion resistance.
- Superior clamping force from high quality castings.
- Safely retrofit without welding.



Material: Cast stainless steel, self colour.

Product Code	A4-70 Bolt Z	Floorplate Thickness t	Clamping Range C	Grating Bar Width W	Hole Ø d	Csk Ø D	Setscrew	
							Tight. Torque ft lb	Hexagon Key mm
<b>LFG1055</b>	M8 (5/16")	min 1/4"	1 3/8" - 2 3/16"	1/8" - 5/16"	15/8"	2"	8	5 (3/16")

### How to install...



- 1) Insert the pre-assembled Type 1055 into the countersunk hole between the grating bars.
- 2) Use an 5/16" hexagon key to rotate the plug anti-clockwise until the underside of the plug locates against the grating bar.
- 3) Use a 3/16" hexagon key to rotate the countersunk setscrew clockwise until the grating lug makes contact with the grating bar.
- 4) Tighten the setscrew to 8ft lb; the grating lug will be drawn up the screw and will activate the thread locking adhesive.

▶ Watch the installation video at [www.LindapterUSA.com](http://www.LindapterUSA.com)